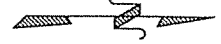


# CLEAN ENERGY 805

<b>Property Name</b>	Vista del Mar Union School District
<b>Address</b>	HWY 101, Goleta, CA 93117
<b>Site Use description</b>	AG-II-320
<b>Square footage/Acreage</b>	APN 081-130-058: 2.3 Acres/ APN 081-130-059: 3.42 Acres
<b>Description of Facility/Land</b>	Vacant Lot
<b>Facility Age</b>	Not Applicable
<b>Roof Condition (age/type)</b>	Not Applicable
<b>Current Tariff from SCE</b>	Not Applicable
<b>Annual Usage and Max Demand</b>	Not Applicable
<b>Opportunities and Constraints</b>	Vacant lot close to Edison power lines
<b>Energy Project Types Considered</b>	Solar
<b>Contact</b>	Dr. Emilio Handall, Superintendent (805-686-1880)
<b>Main questions/concerns</b>	None
<b>Property Map</b>	(attach separately)

# POR. RANCHO NUESTRA SENORA DEL REFUGIO

081-13

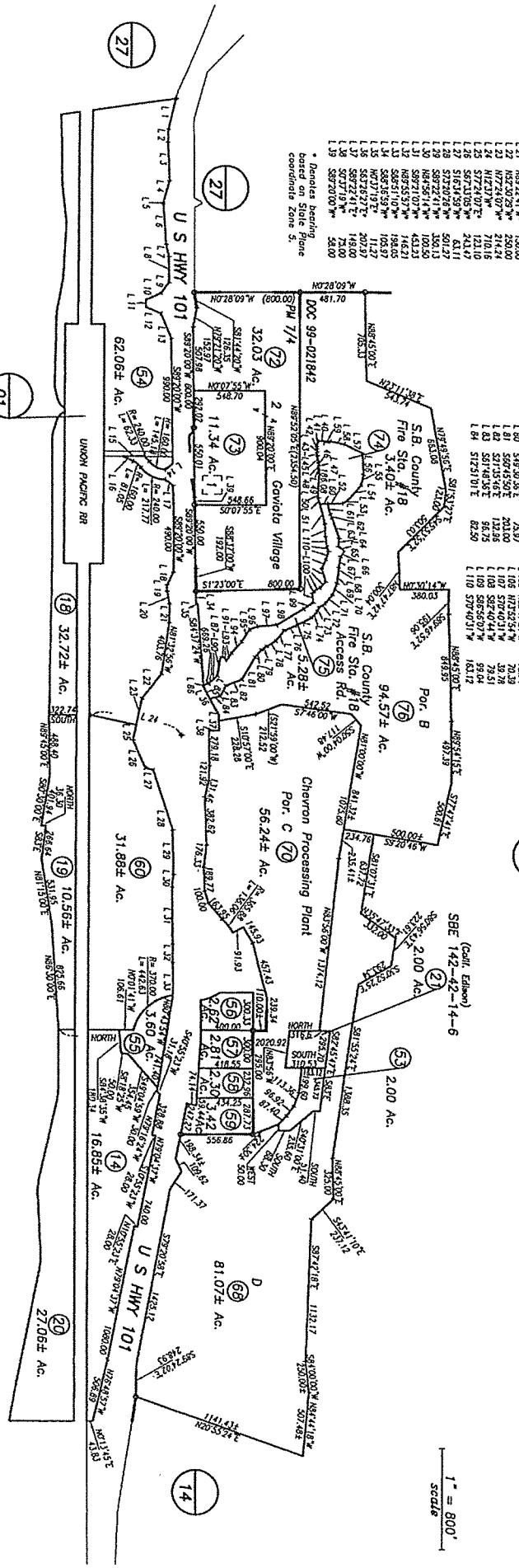


1" = 800'  
SCALE

NO.	LINE BEARING	DISTANCE
-----	--------------	----------

L 1	N89°10'20"W	248.73
L 2	S89°11'10"W	308.66
L 3	N74°08'00"W	175.28
L 4	S85°14'00"W	116.82
L 5	S85°14'00"W	101.59
L 6	S89°20'00"W	200.00
L 7	S89°20'00"W	111.02
L 8	S89°20'00"W	68.00
L 9	S89°20'00"W	111.02
L 10	S89°20'00"W	125.40
L 11	S89°20'00"W	229.00
L 12	S89°20'00"W	125.40
L 13	S89°20'00"W	229.00
L 14	S89°20'00"W	125.40
L 15	S89°20'00"W	229.00
L 16	S89°20'00"W	125.40
L 17	S89°20'00"W	229.00
L 18	S89°20'00"W	125.40
L 19	S89°20'00"W	229.00
L 20	S89°20'00"W	125.40
L 21	S89°20'00"W	229.00
L 22	S89°20'00"W	125.40
L 23	S89°20'00"W	229.00
L 24	S89°20'00"W	125.40
L 25	S89°20'00"W	229.00
L 26	S89°20'00"W	125.40
L 27	S89°20'00"W	229.00
L 28	S89°20'00"W	125.40
L 29	S89°20'00"W	229.00
L 30	S89°20'00"W	125.40
L 31	S89°20'00"W	229.00
L 32	S89°20'00"W	125.40
L 33	S89°20'00"W	229.00
L 34	S89°20'00"W	125.40
L 35	S89°20'00"W	229.00
L 36	S89°20'00"W	125.40
L 37	S89°20'00"W	229.00
L 38	S89°20'00"W	125.40
L 39	S89°20'00"W	229.00

\* Denotes bearing  
considered State Plane  
coordinate State S.



PACIFIC

OCEAN

**NOTICE**  
Assessor's Parcels are for tax assessment  
purposes only and do not indicate either  
parcel legality or a valid building site.

Assessor's Map Bk, 081-Pg, 13  
County of Santa Barbara, Calif.

12/05 89 Hilo 74, 75, 76